

# Advantech AE Technical Share Document

<b>Date</b>	2019/7/31	<b>SR#</b>	1-3844402733
<b>Category</b>	■FAQ □SOP	<b>Related OS</b>	EdgeLink image
<b>Abstract</b>	How to set up port forwarding from AP to EdgeLink devices?		
<b>Keyword</b>	port forwarding, public IP		
<b>Related Product</b>	ADAM-3600, ECU-1152, ECU-1251, ECU-1051		

■ **Problem Description:**

This document demonstrates the setting SOP of port forwarding. In this way, a user can download/ upload projects or setting commands to the iRTU modules by a public IP on AP.

■ **Answer:**

According to the port number shows on EdgeLink software, the project download is using port number 6001. So if the port forwarding purpose is **for download/ upload project** to the iRTU device, please use port **6001** for port forwarding setting on your router. If the purpose is for **RESTful** commands, then please setup port **443** for port forwarding target. Figure 1 answers the doubts if a user need to know which port number is used for which purpose.

This document demonstrates the purpose of downloading a project to ADAM-3600.

Note: enabling “firewall setting” is **not** required.

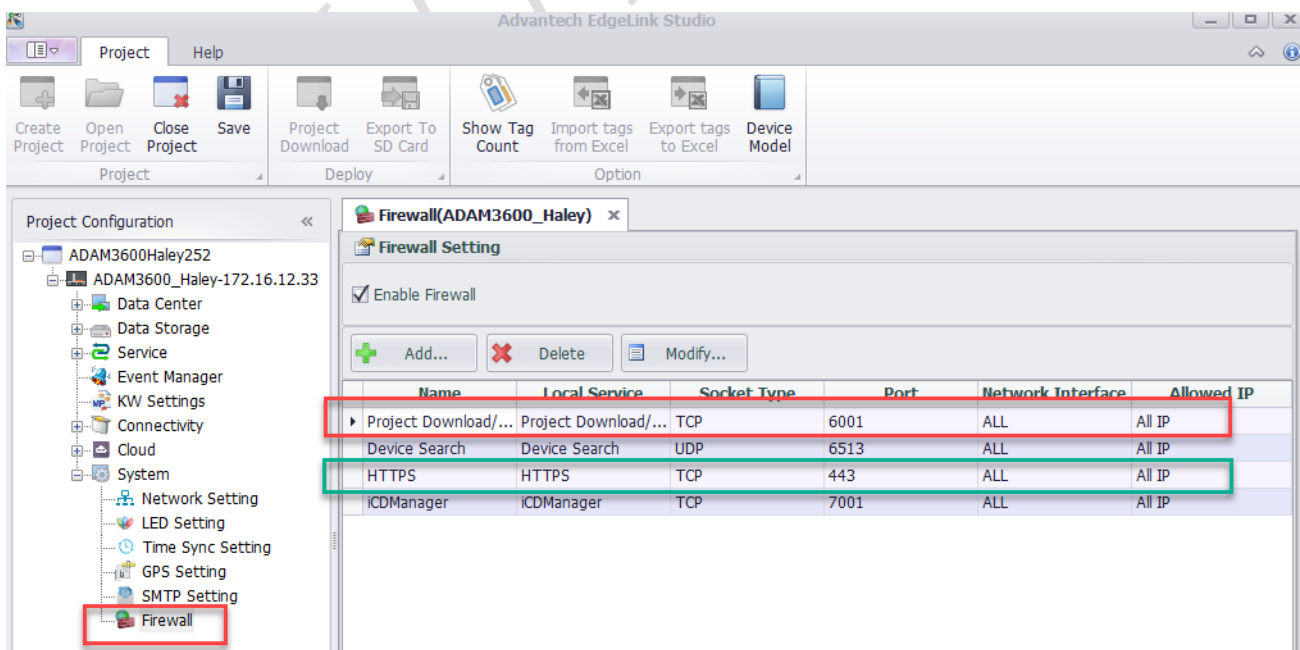


Figure 1. Port number and functions.

Step1. Set port forwarding (port 6001) on AP and the target internal IP address.

Table 1. Assigned IP addresses.

	IP
AP	124.9.5.118
ADAM-3600	192.168.0.104

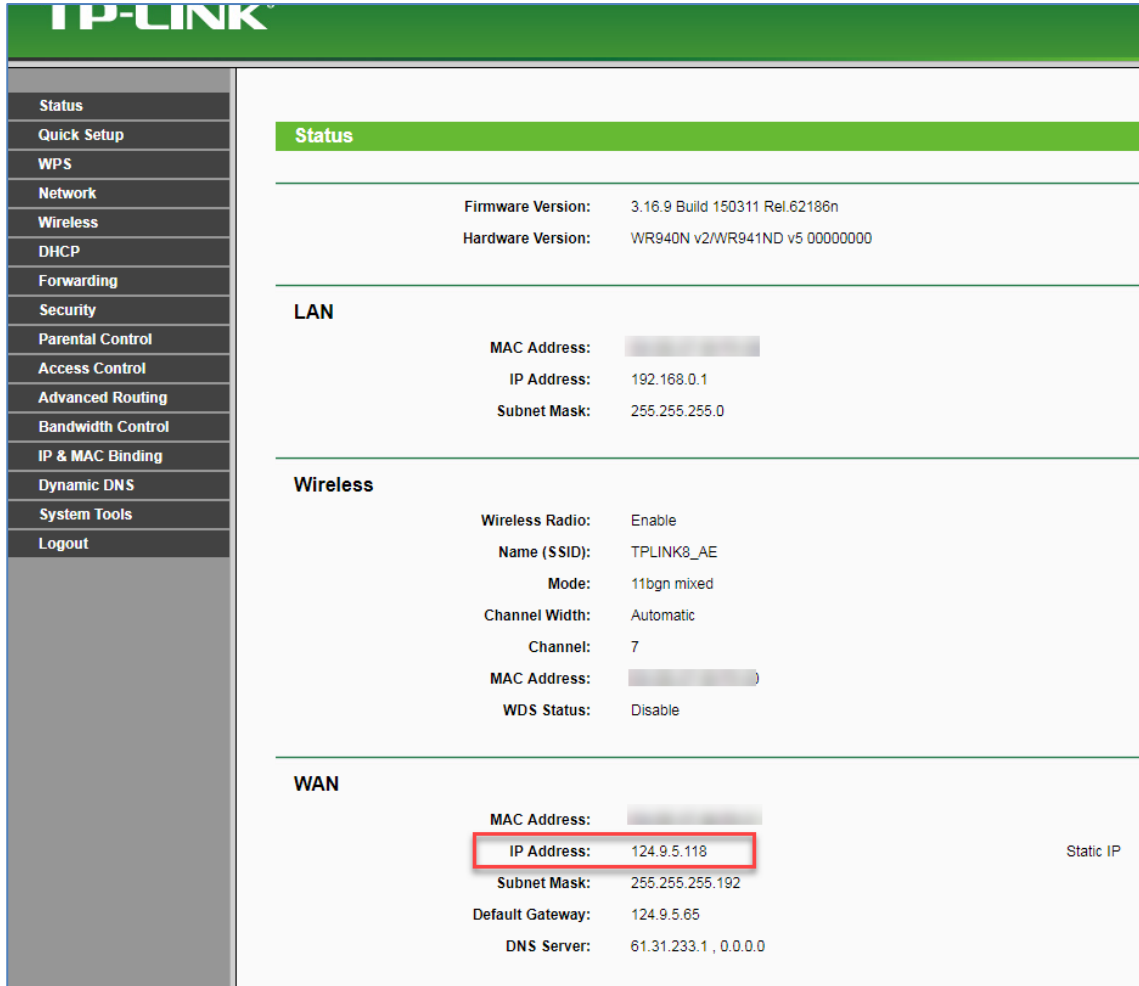


Figure 2. AP is using a public IP.

Step2. Set port forwarding (port 6001) on AP and the target internal IP address.

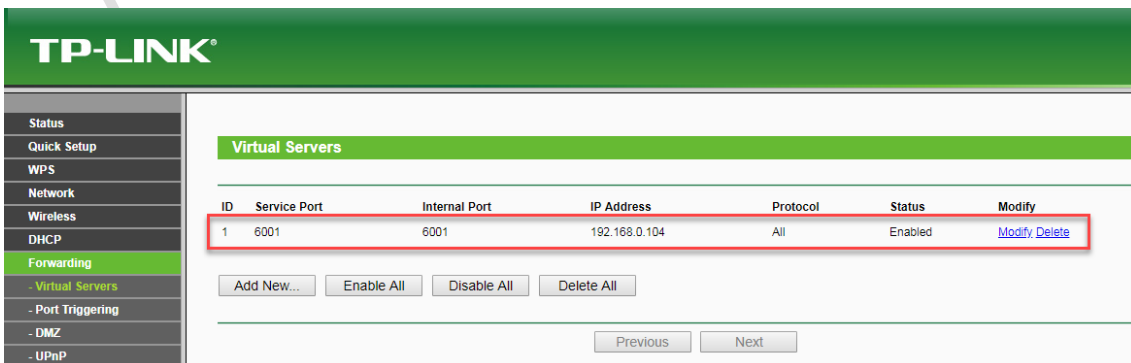


Figure 3. Setup port forwarding on AP according to the table 1 and figure 1.

Step 3. Make sure the target iRTU is alive. There is no need to make sure the device is under the same subnet with the PC EdgeLink software.

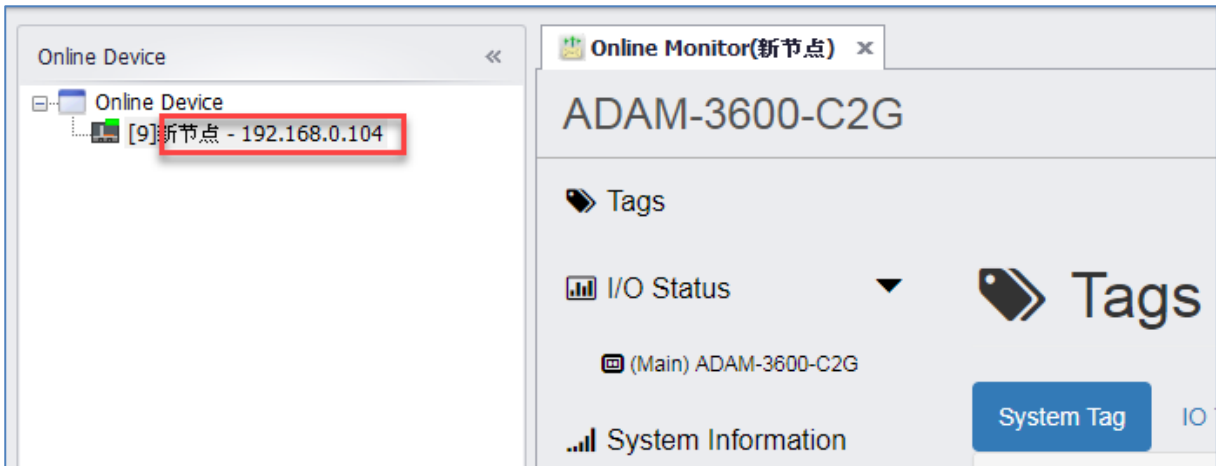


Figure 4. Make sure iRTU device is online.

**Test result:**

Download by using a public IP address. The IP is AP's IP address on WAN port.

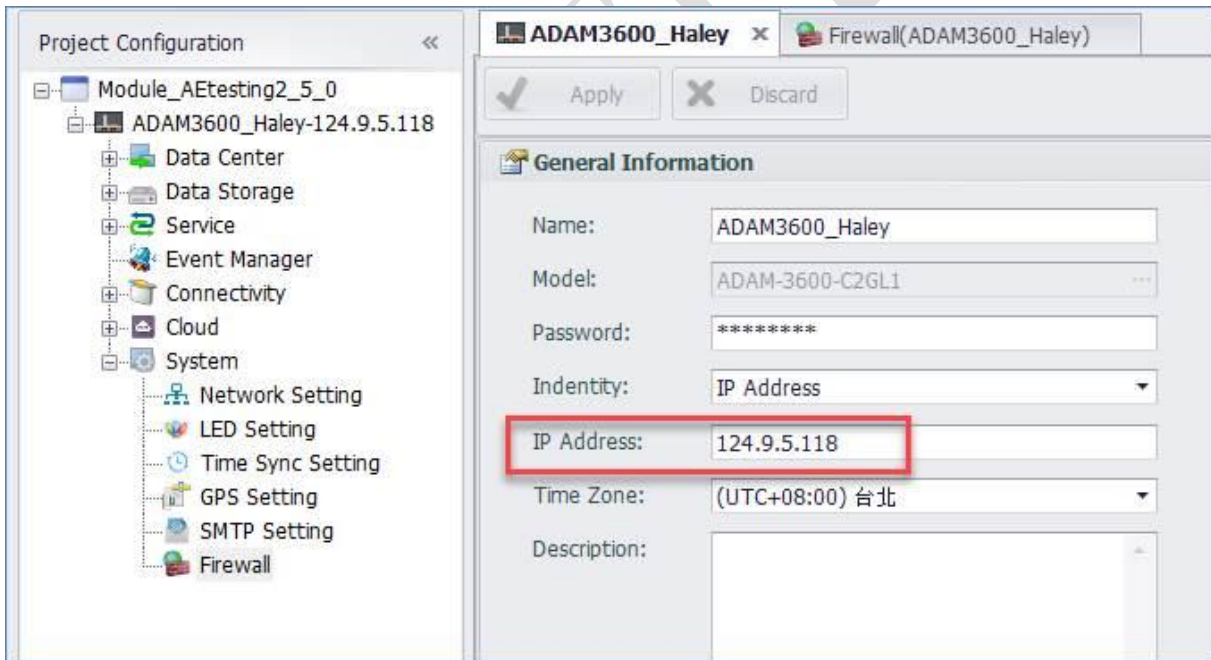


Figure 5. Download project targeting to a public IP.